

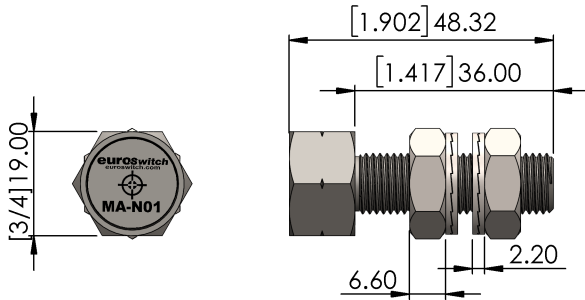
Magnetic Actuator - Nuclear Qualified

MA-N01 / MA-N02

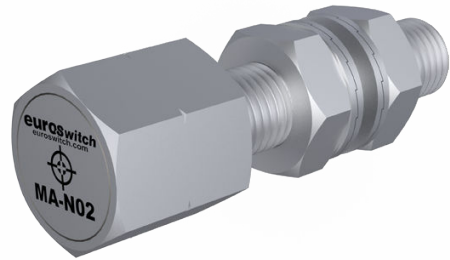
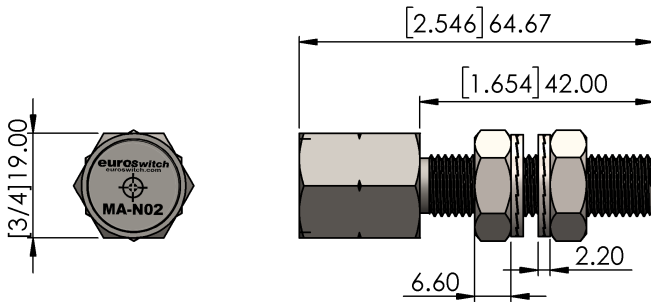
For Sensing with EuroSwitch Nuclear Proximity Switches

Euroswitch FerroProx and MagnaProx Nuclear proximity switches series require an external magnetic actuator to operate. Detailed below are our nuclear qualified magnets designed to provide reliable indication in high radiation, high vibration and high temperature environments.

MA-N01



MA-N02



	MA-N01	MA-N02
Body Material	316L Stainless Steel	316L Stainless Steel
Dimensions	3/4" A/F x 1.90"	3/4" A/F x 2.55"
Thread	7/16-20	7/16-20
Sensing Range	2.5mm / 0.10"	6.5mm / 0.25"
Max Tightening Torque	110Nm	110Nm
Max Operating Temp	300°C	300°C
Mass	75g	100g
Included Accessories	2x Nordlock Washer A4 2x Hex Nut A4	2x Nordlock Washer A4 2x Hex Nut A4

Operating Principles

To obtain the best results possible in your application, the switch and magnet must be mounted onto non-ferrous material.

The proximity switch is triggered when the switch and the target magnet are on axis and within sensing range as shown.

